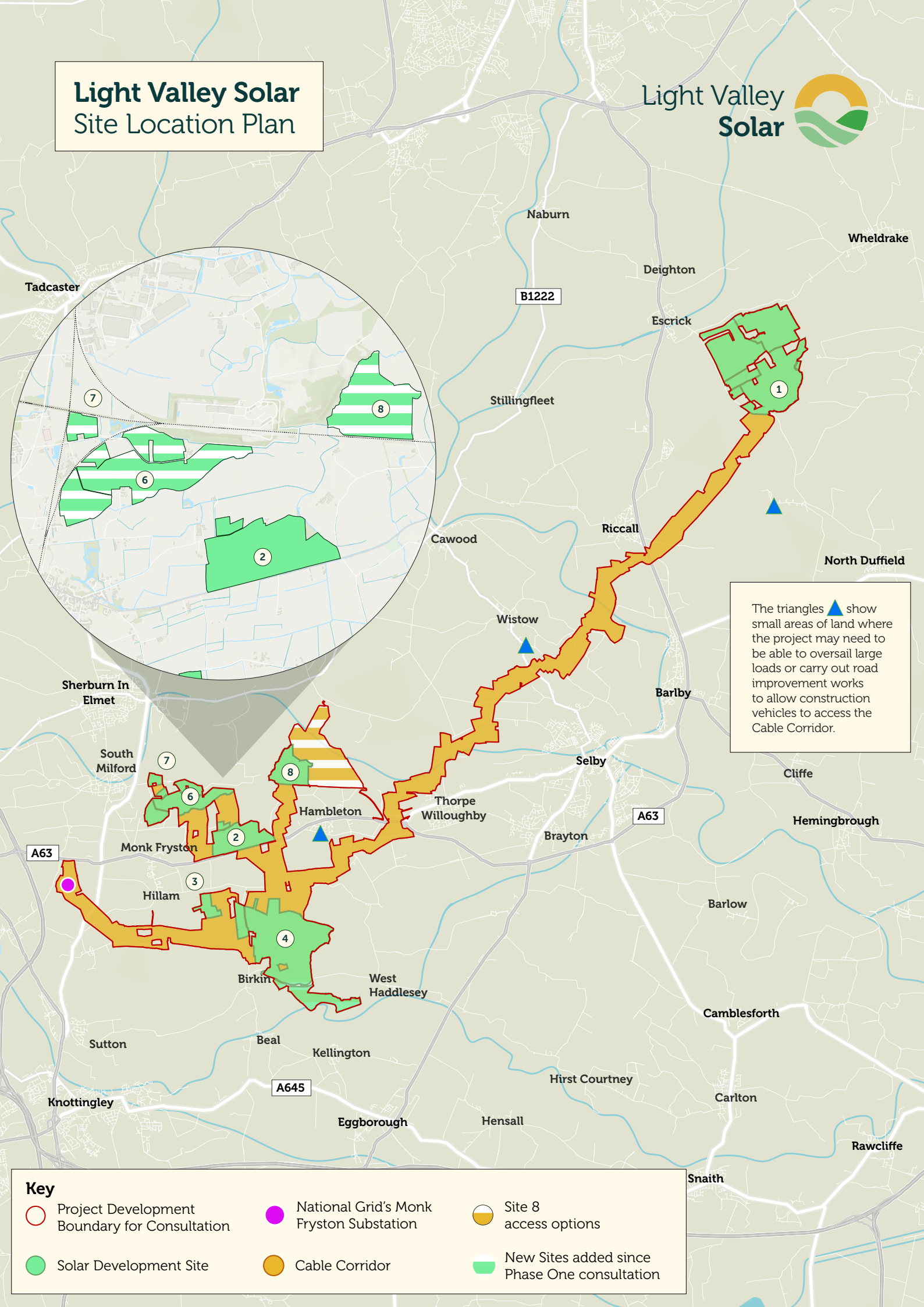


Light Valley Solar Site Location Plan



The triangles ▲ show small areas of land where the project may need to be able to oversail large loads or carry out road improvement works to allow construction vehicles to access the Cable Corridor.

Key

- | | | |
|---|---|--|
| Project Development Boundary for Consultation | National Grid's Monk Fryston Substation | Site 8 access options |
| Solar Development Site | Cable Corridor | New Sites added since Phase One consultation |